

Air Operated Double Diaphragm Pumps **TC-X**

— TC-X030 Plastic

¼" Plastic Diaphragm Pump Data Sheet

Max Flow Rate: 8 L/min.

Liquid Connections: ¼" Female Side-ports.

Max Slurry Size: 0mm.

Max Suction Lift: Dry: 3.5m. Wet (Primed): 8.0m.

Max Discharge Pressure: 0.7 MPa

Check Valve Configuration: Flat Valves, PTFE.

Pump Wetted Material Options: CFPVDF.

Diaphragm Options: PTFE.

Air Motor Material: PPS Plastic.

Description: Special Low Flow ¼" Plastic AODD Pumps available in CFPVDF. Looped C® Spring Air Spool. PPS Plastic (Ryton) Air Motor. Female threaded Side Port Connections. PTFE Diaphragms & Flat Check Valves. Reinforced PP Base. Internal Exhaust Silencer.

Pump Features: ¼" CFPVDF Plastic AODD Pumps fitted with the Looped C® Air Spool, Ekonol® Seal Rings & Fully Independent Pilot Valves for increased performance, reliability & extended life cycle. Special low flow model where typically an Export Licence is not required. Drop-in dimensions & footprint. Fully bolted body, heavy-duty construction and sturdy plastic base. Manufactured from high grade reinforced engineering plastics for mechanical strength, rigidity, abrasion resistance & chemical stability. 100% oil or grease lubrication free, offering clean, emissions free, environmentally friendly operation. Easily maintainable with modular replaceable wear parts, outside accessible Air Spool & manual Spool Reset Switch. Fully torqued, leak and operation tested prior to shipment. Designed and manufactured in Japan.



TC-X030VT
¼" CFPVDF Pump
8 L/min.

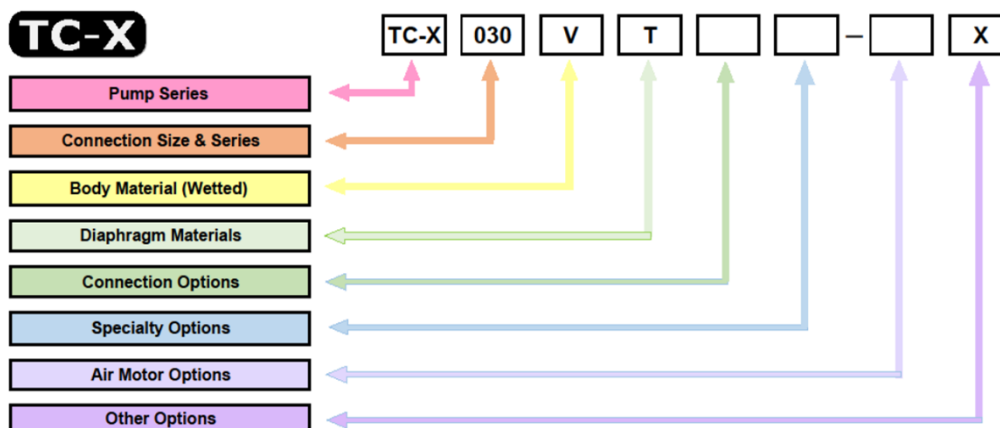


030 Plastic Pump Specifications

| Pump Model / Material | VT |
|----------------------------------|--|
| Max Flow Rate | 8 L/min [2.1 GPM] |
| Max Solids Size | 0 mm |
| Max Discharge Pressure | 0.7 MPa [100 psi] |
| Supply Air Pressure Range | 0.2 – 0.7 MPa [30 - 100 psi] |
| Max Suction Lift | Dry: 3.5 meters. Wet (Primed): 8.0 meters. |
| Max Air Consumption | 250 L/min (ANR) [8.83 SCFM] |
| Max Discharge Volume Per Cycle | 15 mL |
| Ambient Temperature Range | 0 – 70°C [32 – 158°F] |
| Liquid Temperature Range | 0 – 60°C [32 – 140°F] |
| Connections: Suction & Discharge | ¼" Female Threaded Side Ports |

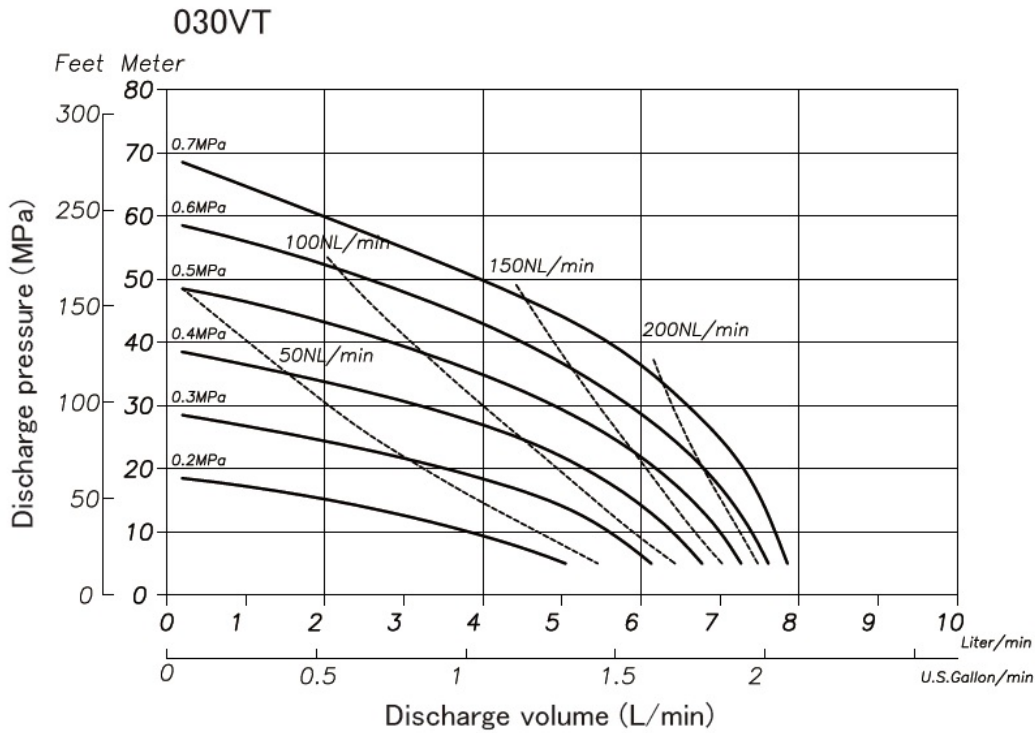
Note: Factors affecting a pumps stated liquid flow rate, suction lift & solids handling capabilities include but are not limited to; pump size, diaphragm, ball valve & ball seat, type & materials of construction, air inlet pressure & air flow capability, liquid viscosity, specific gravity, slurry content, ambient & liquid temperature, liquid inlet & liquid outlet width, piping type, piping length & overall piping configuration. A minimum supply air pressure of 30 PSI (0.2 MPa) is required to operate the pump. If the supply pressure is less than 30PSI (0.2 MPa), the pump may not operate properly. Flat type check valve pumps are not recommended for use with slurry laden liquids. Oil & Grease Lubrication is not required under normal operating conditions. All 030 Series Plastic Diaphragm Pumps are shipped complete with reinforced PP plastic Base, Rubber Feet, Air Inlet Shutoff Valve & Internal Exhaust Silencer as Standard Accessories.

Nomenclature



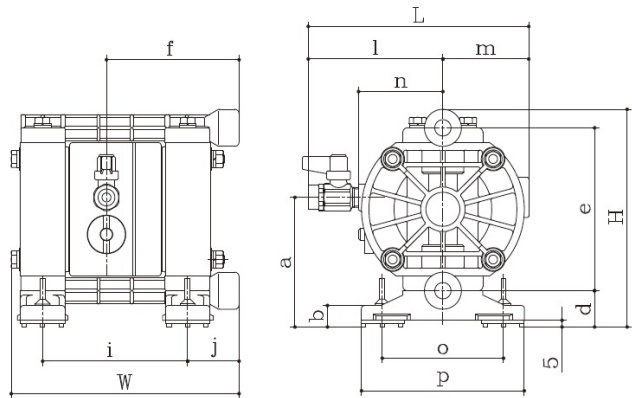
Optional Electric Stroke Counter. Electric Proximity Sensor, Cable and PP or SUS Cap. Will fit directly on any standard pump.

Pump Performance Curves



Wetted Materials Of Construction

| | |
|-------------------|------------------|
| MODEL | 030VT |
| Pump Wetted Parts | PVDF |
| Diaphragm | PTFE |
| Valve Stopper | PVDF |
| Flat Valve | PTFE |
| Valve Seat | PVDF |
| Center Disk | PVDF |
| Weight | 1.7 kg [3.7 lbs] |



Dimensional Drawings

| MODEL | H | W | L | a | b | d | e | f | i | j | l | m | n | o | p | AIR INLET | AIR EXHAUST | LIQUID IN/OUT |
|-------|---------------|---------------|---------------|--------------|--------------|--------------|---------------|--------------|--------------|--------------|--------------|--------------|--------------|--------------|---------------|-----------|-------------|---------------|
| 030VT | 147 [5.79] | 154 [6.06] | 149 [5.87] | 88 [3.46] | 15 [0.59] | 25 [0.98] | 110 [4.33] | 89 [3.50] | 98 [3.86] | 35 [1.38] | 91 [3.58] | 58 [2.28] | 57 [2.24] | 82 [3.23] | 110 [4.33] | Rc1/4 | Rc3/8 | Rc1/4 |

Looped C® Air Spool

New Generation Spring Assisted Non-Centering Spool. Newly Improved with SUS Non-Centering Looped C® Springs. Original Ekonol® Seal Rings, Strengthened Spring Retainer and SUS Spool Shaft. Outside Accessible. Modular Spool Sleeve. Modern Long Life Materials of Construction. Oil & Grease Lubrication Free Design.



TC-X

AODD Pump Capabilities.

| | | |
|----------------------|-------------------------------|--------------------------------|
| Self Priming. | Variable Discharge Pressures. | Inherently Safe Design. |
| Run Dry. | Transfer Liquid Slurries. | Portable & Easy to Use. |
| Run up to Dead Head. | Transfer Large Sized Solids. | Transfer Viscous Fluids. |
| Variable Flow Rates. | Handle Abrasives. | Frequent Start Stop Operation. |
| Shear Sensitivity. | Transfer Chemicals. | Powered by Compressed Air. |

For more information about TC-X Pumps please contact: sales@yts-pump.com

©YTS Co Ltd Japan. All Rights Reserved 2020

Looped C®

CE Ex ATEX Compliant II 2GD c T5



JQA-QMA14279



091