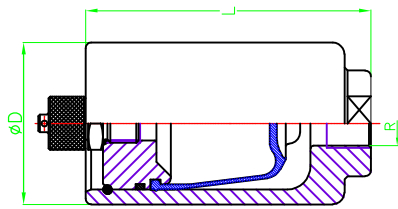


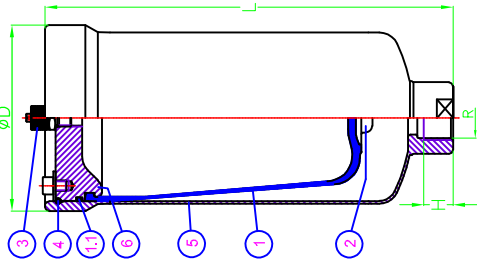
FOR HIGHER PRESSURES, SIZES, MATERIALS AND THREAD CONNECTIONS, PLEASE CONSULT

ORDER EXAMPLE: U015 A04 B 1 A1
 Capacity: 1.5 litres
 A04≐40bar
 B= BUTYL Rubber Bladder
 3/4" Standard Connection
 Body & insert material: AISI 316L

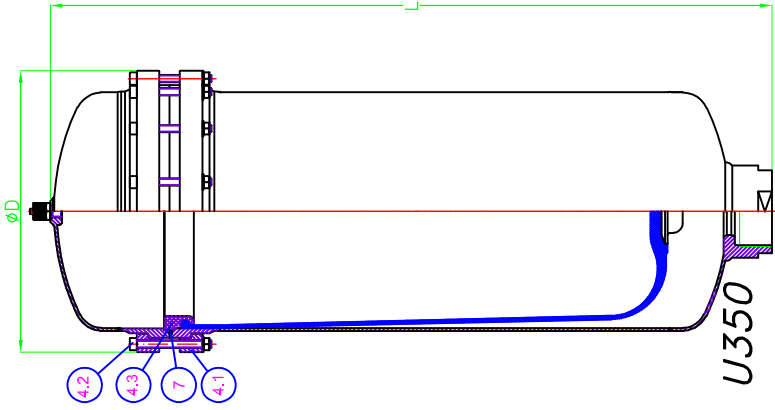
Wall thickness acc. to AD-2000 code
 Hydrostatic test pressure @ 1.5 * Design pressure @ 20°C



U000 to U003



U007 to U250



U350

H = MAXI. LENGTH OF THREAD CONNECTION

Standard Bladder Rubbers: N=NBR, B=BUTYL, E=EPDM, V=FKM

(Other Rubbers: Neoprene, Hypalon, HNBR, etc.)

Rubbers Max. Working Temperatures (°C)	N	B	E	V
	+80	+100	+130	+200
	-15	-30	-30	-20
Working Temperatures versus Working Pressures **				
For a temperature of 80°C correspond design pressure x 0.87				
" " " 100°C " " x 0.82				
" " " 130°C " " x 0.78				
" " " 200°C " " x 0.68				

THE MAX. WORKING TEMPERATURE CAN BE REDUCED DEPENDING ON THE LIQUID IN CONTACT

Those Pulsation Dampeners ought to be filled with gas at a value of 0.80x the pressure to stabilize and that at the working temperature

NOTE: The precharge with gas or air must be done slowly and with our charging tool Ref. BV160A1TM

Value of "K": $\text{Maxi. Pressure} \leq K (\text{@Constant Temp.})$
 Filling gas Pressure

PULSATION DAMPER Reference	VOLUME (litres)	DESIGN PRESSURE (bar-g @50°C)	D (mm)	L (mm)	R (BSP)	H (mm)	WEIGHT (Kg)	K VALUE
U000	0.04	260	55	70	3/8"	14	0.8	
U001	0.09			97			1.0	2.5
U002	0.18	180	70	122	1/2"	16	1.8	
U003	0.36		85	168			3.6	3.0
U007	0.65	50	88	208	3/4"	20	2.5	3.5
U010	0.95	40	113	211		25	4.3	3.0
U015	1.50			256			4.6	3.5
U030	2.60	30	140	305	1"	27	5.3	
U040	3.80			405			5.7	5.0
U060	5.60	40	167	420	1-1/2"		10.0	
U100	10.40	30	217	432	2"	30	15.0	4.0
U150	15.00			645			19.2	5.0
U250	25.00	20	270	677	2-1/2"		26.0	4.0
U350	35.00		302	772			28.5	2.2

	"O" RING	1	NBR, BUTYL, EPDM & FKM
7	COVER	1	AISI 316L
6	BODY	1	AISI 316L
5	RETAINING RING	1	AISI 316
4.3	BOLTS & NUTS	14	DIN 912 & 934 A4-70
4.2	RETAINING RING	2	AISI 316L
4.1	RETAINING RING	1	DIN17224 (AISI 316)
4	INFLATING N ₂ VALVE	1	AISI 316L (1/4" BSP)
3	INSERT	1	AISI 316L
2	"O" RING	1	NBR, BUTYL, EPDM & FKM
1.1	BLADDER	1	NBR, BUTYL, EPDM & FKM
1	DENOMINATION	QT.	MATERIALS

ATTENTION! ALWAYS MUST BE MOUNTED VERTICALLY (VALVE 3 ON TOP)