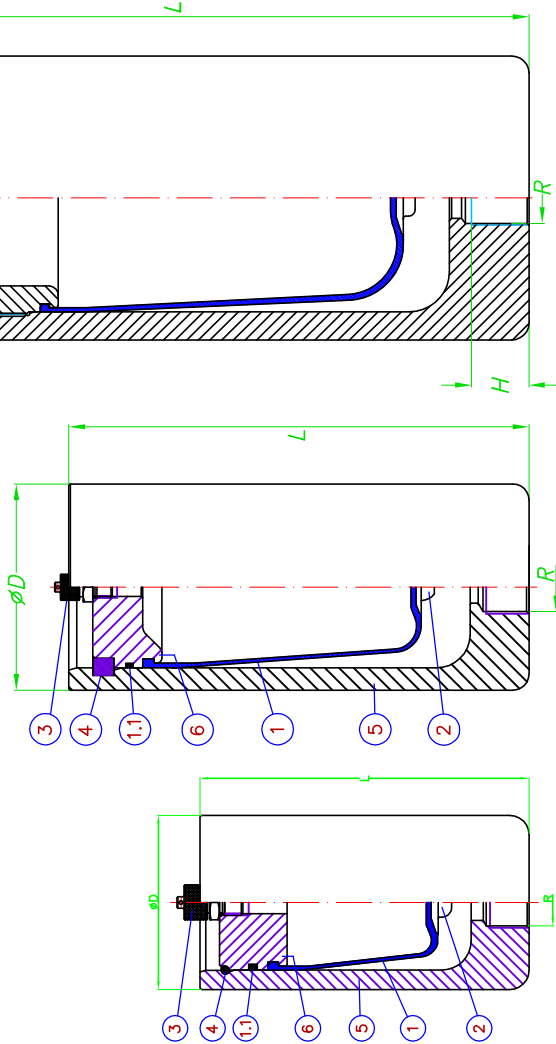


**FOR HIGHER PRESSURES, SIZES, MATERIALS AND THREAD CONNECTIONS, PLEASE CONSULT**

**ORDER REF. EXAMPLE: U007 A01 V 1 PP**

Capacity: 0.65 liter  
 A01 ≡ 10 bar  
 V = FKM Rubber Bladder  
 3/4" Standard Connection  
 Body & insert material: Polypropylene  
 \*\* Use our PTFE + PVDF Belows dampeners

Wall thickness acc. to AD-2000 code



U000 to U100  
 H = MAXI. LENGTH OF THREAD CONNECTION

U150 & U200

**MAX. WORKING PRESSURE FOR ALL SIZES: 10 bar-g**

**MINIMUM SAFETY FACTOR: 5:1 (Minimum Rupture pressure: 50 bar-g)**

Standard Bladder Rubbers: N=NBR, BUTYL, E=EPDM, V=FKM (EPDM not available for U000)

**WORKING LIMITS TEMPERATURES(°C):**  
 (+) PC = PVC  
 (+) PP = Polypropylene  
 (-15° to +70°C for PVDF)

THE MAX. WORKING TEMPERATURE CAN BE REDUCED DEPENDING ON THE LIQUID IN CONTACT

Those Pulsation Dampeners ought to be filled with gas at 80% of the working pressure. It shall be done at the working temperature.

**Value of "K":**  $\frac{\text{Maxi. Pressure}}{\text{Filling gas Pressure}} = K$  (@Constant Temp.)

PULSATION DAMPER REF.	VOLUME (litres)	D (mm)	L (mm)	R (BSP)	H (mm)	WEIGHT (Kg)			K VALUE
						PP	PC	PD	
U000	0.04	60	77	3/8"	16	0.23	0.30	0.37	2.5
U001	0.09	60	102			0.25	0.34	0.42	
U002	0.18	80	140	1/2"	20	0.50	0.72	0.90	3.0
U003	0.36	90	170	3/4"	24	0.68	1.03	1.26	
U007	0.65	100	217			1.05	1.50	1.84	3.5
U010	0.95	130	242		26	1.86	2.80	3.76	
U015	1.50		286	1"		2.20	3.10	4.15	3.5
U030	2.60	160	324			3.70	5.60	7.50	
* U040	3.80		420		32	4.60	6.60	8.30	4.0
* U060	5.60	200	468	1-1/2"		8.00	11.5	**	
* U100	10.40		493		50	12.4	18.4	**	3.0
* U150	15.00	250	663	2"		16.4	24.6	**	
* U200	20.00		880			21.0	27.7	**	2.0
6 COVER						1 (+) PP, PD or PC			
5 BODY						1 (+) PP, PD or PC			
4 RETAINING RING						1 (+) PP. S.Steel or PD for PD dampeners			
3 FILLING (AIR or N <sub>2</sub> ) VALVE						1 AISI 316L 1/4" BSP			
2 INSERT						1 (+) PP, PD or PC (Not included in U000)			
1.1 "O"-RING						1 NBR, EPDM, FKM & BUTYL			
1 BLADDER						1 NBR, EPDM, FKM & BUTYL			
N° DENOMINATION						QT. MATERIALS			

TOLERANCES: External dimintions: ±3% Volume: ±2.5% Weight: ±5%

ATTENTION! THE SIZES WITH ( \* ) ALWAYS MUST BE MOUNTED VERTICALLY (VALVE 3 ON TOP)

NOTE: The precharge with gas or air must be done slowly and with our charging tool Ref. BVXXXA1TM

