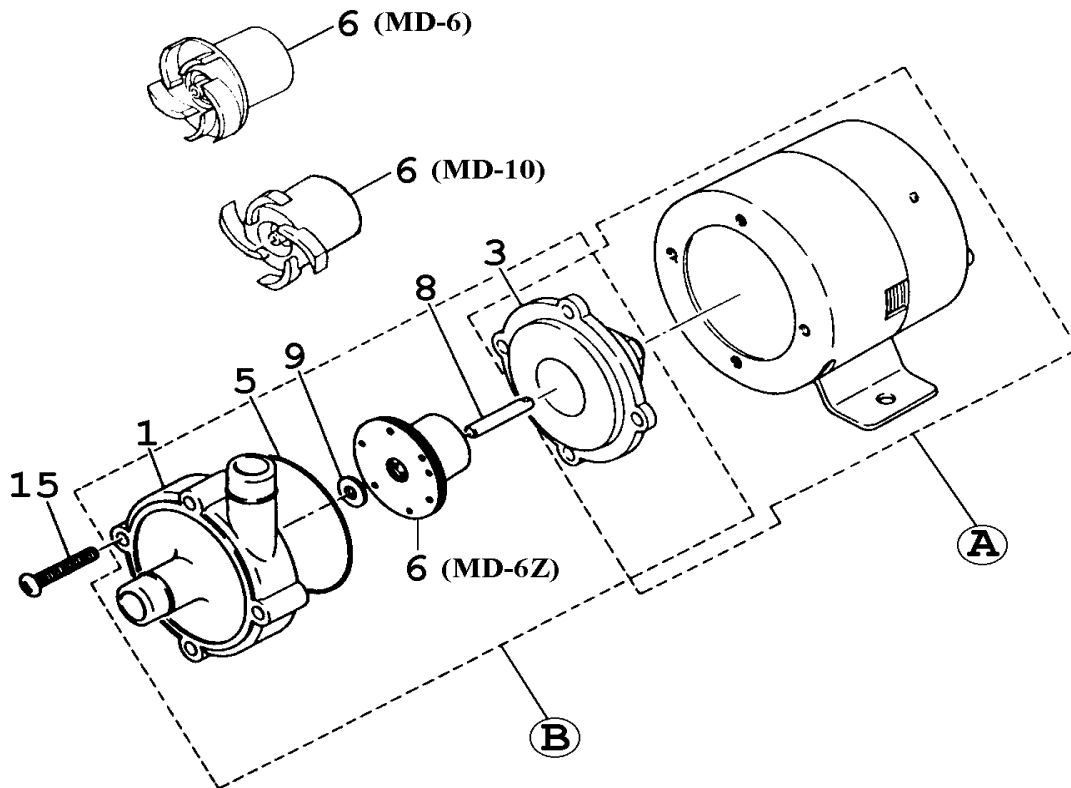


MD-6 • 6Z • 10

No. 51-034
Mar. 01, 2006



Item	Description	Q'ty	Remark	MD-6		MD-6Z		MD-10	
				Part No.		Part No.		Part No.	
1	Front Casing	1	GFRPP	MD0749		MD0256		MD0749	
3	Rear Casing	1	GFRPP	MD0252		ï		MD0750	
5	O-Ring <AS568-031>	1	FKM	MD0247		ï		ï	
		1	EPDM	MD0248		ï		ï	
6	Impeller Unit	1	GFRPP+Ferrite	MD0251		MD0261		MD0271	
8	Spindle	1	Al. Ceramic	MD0249		ï		ï	
9	Thrust Ring	1	Polyethylene	MD0250		ï		ï	
15	Screw+W. <M4x28>	4	SUS304 equiv.	MD0017		ï		ï	
A	Rear Casing+Drive Magnet Unit+Motor [AC230V]	1	3 W	MD0624					
		1	3 W			MD0354			
		1	6 W					MD0751	
B	Wet End Set	1	with FKM	1111265		MD0264		1111735	
		1	with EPDM						

△ Subject to change without prior notice! △ Actual pump may differ from the exploded view!