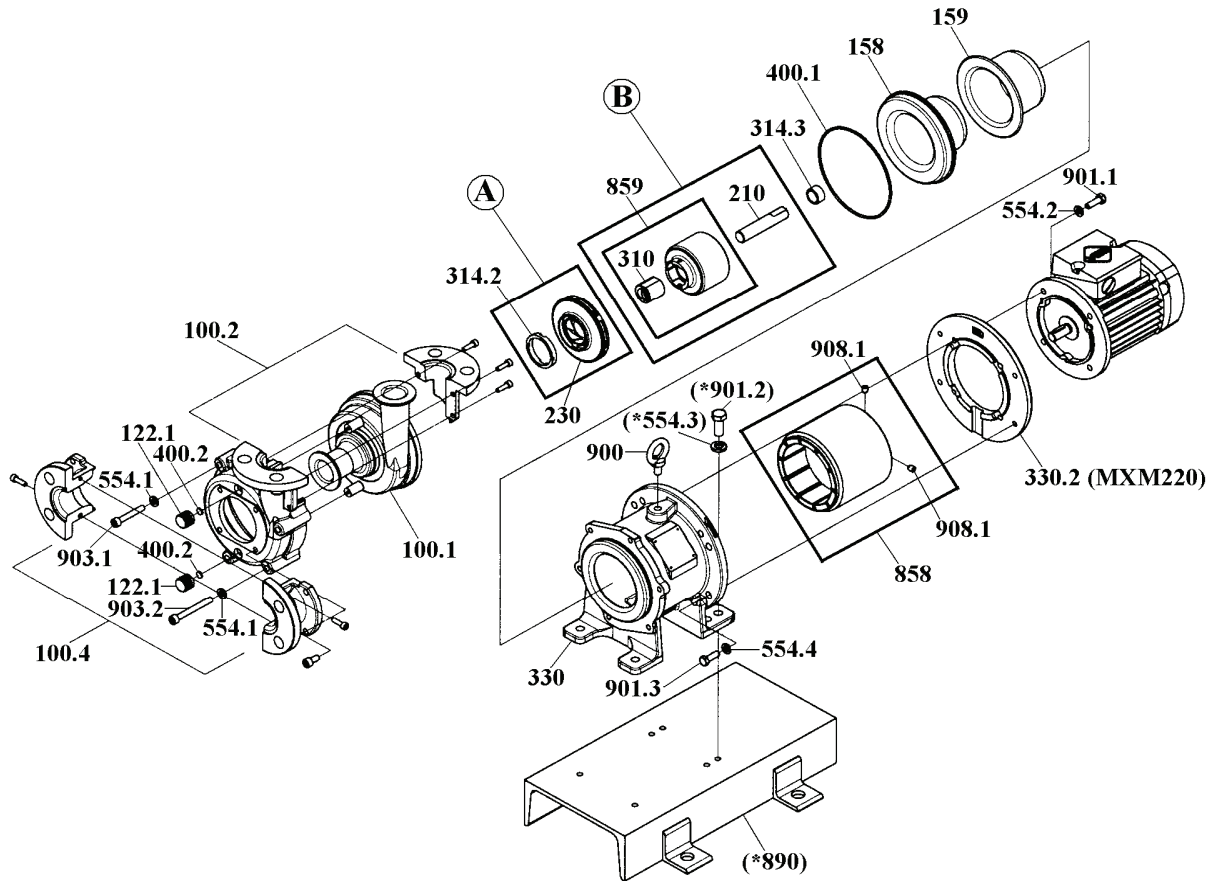


Item	Description	Q'ty	Type	Material	Part No.	Code No.	
100.1	Front Casing+Liner Ring Unit	1	CF•FF	CFRETFE+Ceramic	MXM0170	1210042110	
		1	KK	CFRETFE+SiC	MXM0171	1210042120	
100.2	Cover 'A/B' Unit (ISO)	1		Ductile Iron	MXM0231	1220305720	
100.4	Cover 'C' Unit (ISO)	1		Ductile Iron	MXM0232	1220305920	
122.1	Air Vent/Drain Cap (M14x2)	2		ETFE	MXM0114	1240644600	
158	Rear Casing	1	H	CFRETFE	MXM0172	1231190100	
159	Rear Casing Cover	1	H	FRP	MXM0173	1231190200	
210	Spindle	1	CF	Alumina Ceramic	MX0118	1240725000	
		1	KK	SiC	MX0427	1240765100	
230	Impeller <1> [1XF]	Ø 100 mm	1	1001	CFRETFE	MXM0198	1240862710
		Ø 90 mm	1	0901	CFRETFE	MXM0199	1240862720
		Ø 70 mm	1	0701	CFRETFE	MXM0201	1231021650
		Ø 105 mm	1	1052	CFRETFE	MXM0202	1231199840
310	Bearing	1	CF	High Density Carbon	MX0475	1240764800	
		1	KK	SiC	MX0476	1240764900	
	<210+310> Spindle+Bearing Unit	1	FF	Alumina Ceramic	MXM0339	2270270210	
314.2	Mouth Ring	1	CF•FF	PTFE	MX0208	1240752800	
		1	KK	SiC	MX0472	1240393300	
314.3	Rear Thrust	1		CFRETFE	MX0428	1240764700	
330	Frame	0,37•0,75kW	1	220•221-H	MXM0209	1210042420	
330.2	Motor Adapter	0,37kW	1	220-H	MXM0211	1231190300	
400.1	O-Ring <G-140>	1	V	FKM-A	MXM0218	0325300485	
		1	E	EPDM	MXM0220	0325300486	
		1	A	Aflas®	MXM0221	0325300487	
		1	P	DAI-EL Perfluoro®	MXM0217	0325300488	
400.2	Gasket (t: 2mm, Ø 12mm)	2	V	FKM	MXM0009	1240010300	
		2	E	EPDM	MXM0010	1240014200	
		2	A	Aflas®	MXM0011	1240102200	
		2	P	DAI-EL Perfluoro®	MXM0015	1240465900	

⚠ Subject to change without prior notice! ⚠ Actual pump may differ from the exploded view!



Item	Description	Q'ty	Type	Material	Part No.	Code No.	
858	<b>Drive Magnet Unit</b> (with 2x908.1)	0,37kW [XMJ20H]	1	220-H	Ductile Iron+Mag.	<b>MXM0207</b>	1231190500
		0,75kW [XMJ21H]	1	221-H	Ductile Iron+Mag.	<b>MXM0251</b>	1231190700
859	<b>Magnet Capsule+ Bearing Assembly</b>	0,37kW	1	220-CF	CFRETFE+Carbon	<b>MX0424</b>	1231021310
			1	220-KK	CFRETFE+SiC	<b>MX0426</b>	1231021330
		0,75kW	1	221-CF	CFRETFE+Carbon	<b>MX0443</b>	1231022110
			1	221-KK	CFRETFE+SiC	<b>MX0445</b>	1231022130
554.1	<b>Spring Washer</b> (Cover 'A/B') M8	6		SUS304 equivalent	<b>MDM0028</b>	0154100057	
554.2	<b>Spring Washer</b> (Motor) M8	4	220	SUS304 equivalent	<b>MDM0028</b>	0154100057	
	<b>Spring Washer</b> (Motor) M10	4	221	SUS304 equivalent	<b>MDM0030</b>	0154100022	
554.4	<b>Spring Washer</b> (M. Adapter) M8	4	220	SUS304 equivalent	<b>MDM0028</b>	0154100057	
900	<b>Eye Bolt</b> (Frame) M10	1		Steel		0150800002	
901.1	<b>Hex. Bolt</b> (Motor) M8x20	4	220	SUS304 equivalent	<b>MDM0037</b>	0150100163	
		4	221	SUS304 equivalent	<b>MDM0041</b>	0150100181	
901.3	<b>Hex. Bolt</b> (M. Adapter) M8x25	4	220	SUS304 equivalent	<b>MXM0215</b>	0150100164	
903.1	<b>Cap Bolt</b> (Cover 'A/B') M8x50	3		SUS304 equivalent	<b>MXM0212</b>	0150300038	
903.2	<b>Cap Bolt</b> (Cover 'A/B') M8x70	3		SUS304 equivalent	<b>MXM0213</b>	0150300226	
908.1	<b>Setscrew</b> (Drive Mag.Unit) M8x10	2	220•221	Steel	<b>MDM0044</b>	0152100046	
A	<b>Impeller &lt;1&gt; + Mouth Ring Assembly</b>	Ø 100 mm	1	1001-CF•FF	CFRETFE+PTFE	<b>MXM0186</b>	1240861110
		Ø 90 mm	1	0901-CF•FF	CFRETFE+PTFE	<b>MXM0187</b>	1240861120
		Ø 70 mm	1	0701-CF•FF	CFRETFE+PTFE	<b>MXM0189</b>	1231023660
		Ø 105 mm	1	1052-CF•FF	CFRETFE+PTFE	<b>MXM0190</b>	1231199940
	<b>Impeller &lt;2&gt; + M.R. "</b>	Ø 100 mm	1	1001-KK	CFRETFE+SiC	<b>MXM0192</b>	1240861410
		Ø 90 mm	1	0901-KK	CFRETFE+SiC	<b>MXM0193</b>	1240861420
		Ø 70 mm	1	0701-KK	CFRETFE+SiC	<b>MXM0195</b>	1231023760
		Ø 105 mm	1	1052-KK	CFRETFE+SiC	<b>MXM0196</b>	1231200040
B	<b>Mag. Capsule+Bearing +Spindle Set</b>	0,37kW	1	220-FF	CFRETFE+Ceramic	<b>MXM0338</b>	2270270110
		0,75kW	1	221-FF	CFRETFE+Ceramic	<b>MXM0337</b>	2270270010
*890	<b>Base</b>	1	"B"	Steel	<b>MXM0222</b>	1231210200	
*554.3	<b>Spring Washer</b> (Base) M10	4	"B"	SUS304 equivalent	<b>MDM0030</b>	0154100022	
*901.2	<b>Hex. Bolt</b> (Base) M10x30	4	"B"	SUS304 equivalent	<b>MDM0040</b>	0150100182	

Note: Items asterisked (\*) are optional parts.

△ Subject to change without prior notice! △ Actual pump may differ from the exploded view!