

IWAKI
MAGNETIC
DRIVE
PUMPS

MX-F



Chemically resistant magnetic drive pumps which can tolerate abnormal operation

The MX-F series development was based on the concept of optimum reliability under severe operating conditions and features our unique self radiation structure (PAT.) as well as our well-established non contact system.

The MX-F retains excellent durability under abnormal operation such as dry running, cavitation and closed-discharge operation.

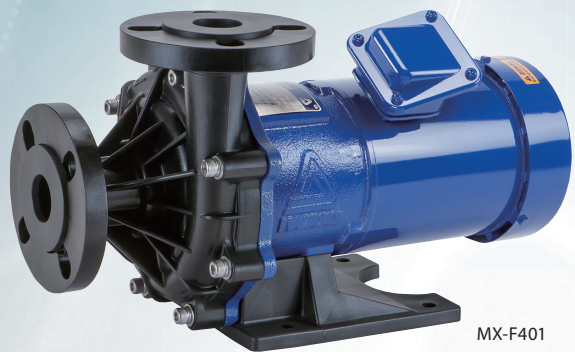
High grade materials including ETFE, are utilized as the main wetted materials.

The MX-F series is an excellent choice for reliably handling a wide range of chemicals in various manufacturing processes.

- An improved mechanical strength design allows operation under abnormal conditions and results in reduction of running cost and maintenance cost.
- The adoption of a volute casing divided into two raises efficiency. (PAT.)
- Simply constructed, it is robust and facilitates maintenance.
- Fluororesin, excellent resistance to chemicals.
- Lap joint construction



MX-F403



MX-F401



MX-F250

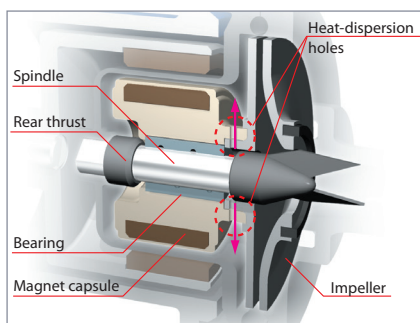


MX-F100

Self-radiating structure (PAT.)

Through heat-dispersion holes provided in the fixed portions of the impeller and the magnet capsule, liquid is circulated under pressure between the spindle and bearing to reduce friction heat transmission and prevent thermal deformation.

(Except MX-F100)



Non-contact structure

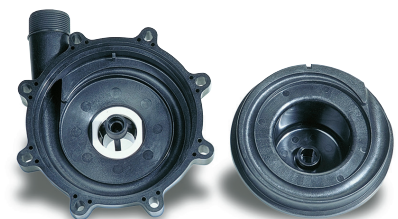
The drive magnet and driven magnet are carefully positioned so that their strong magnetic field limits rear thrust contact of the magnet capsule parts, even during dry running. As a result, heat generation is greatly reduced and liquid circulation is maintained.

(Except MX-F100)

Volute casing divided into two sections (PAT.)

The MX-F series is the first resin magnet pump which uses the pump casing divided into the front casing and the rear casing to form a vortex chamber as an ideal form. Therefore, internal leakage is kept to a minimum and overall hydraulic efficiency is enhanced.

(Except MX-F400)



Front casing

Rear casing

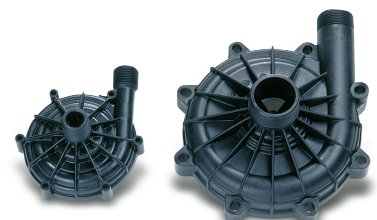
Robust structure

All stress bearing portions, such as the front and rear casings, are reinforced by means of ribs to improve the pressure resistance and the mechanical strength of the pump.

The bearing is not only fixed by conventional press fit but is also sandwiched between the abutting portion in the depth of the magnet capsule and the rear end of the impeller to improve its reliability under high temperature.

(Except MX-F100)

MX-F402 and F403 models: an unplugging preventive lock pin is adopted for ensuring more steady securing.



Front casing of type MX-F100 and MX-F402/403

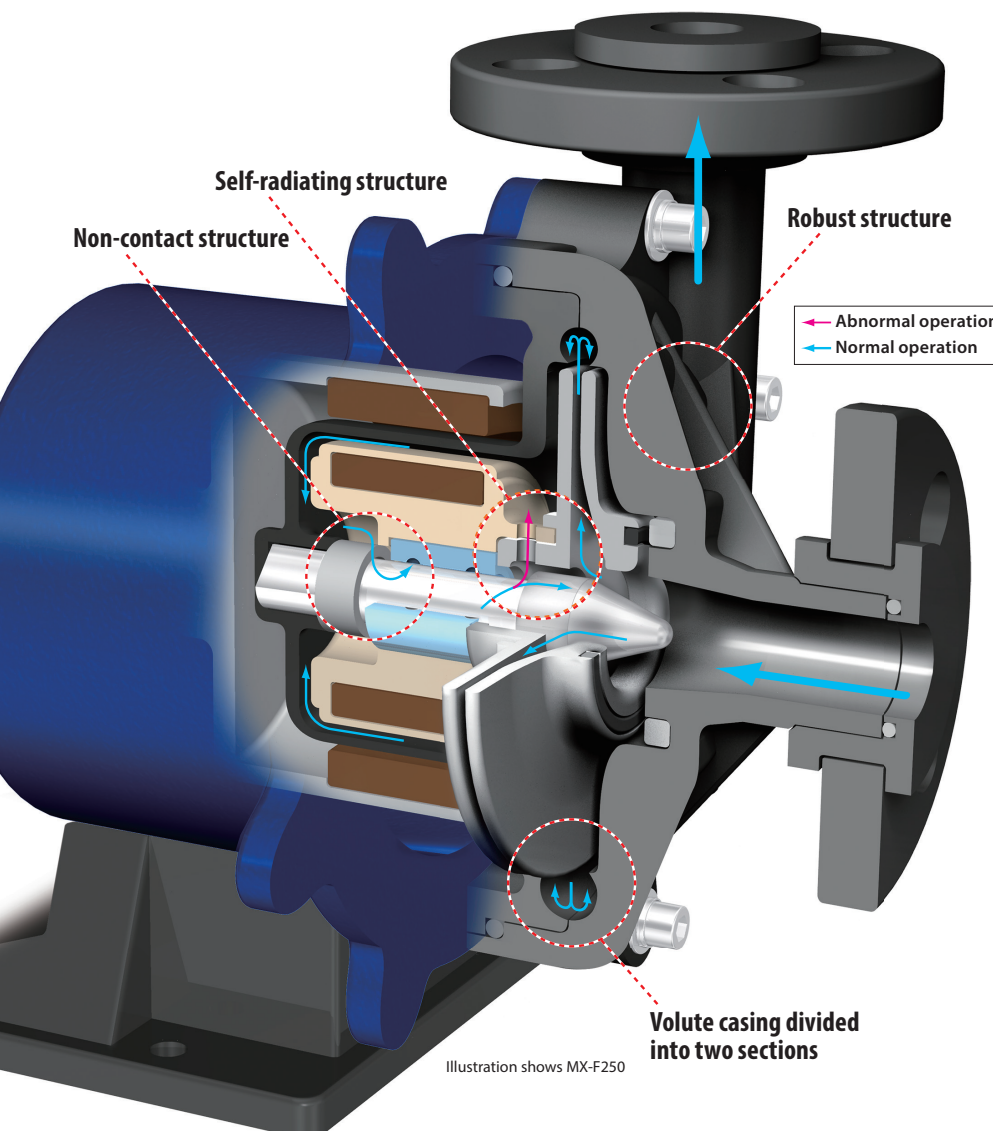
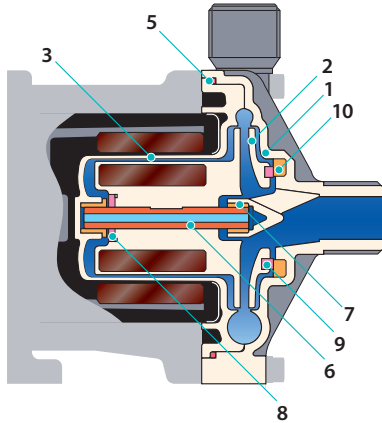


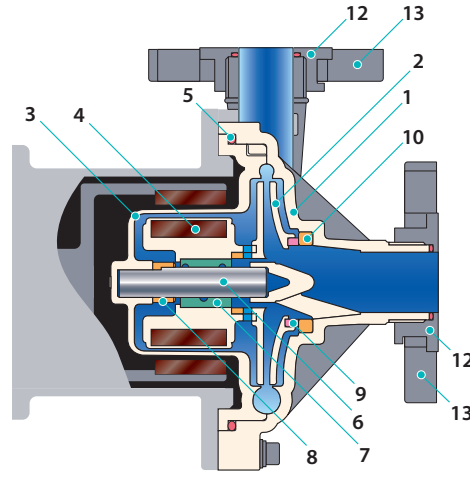
Illustration shows MX-F250

Wet end materials

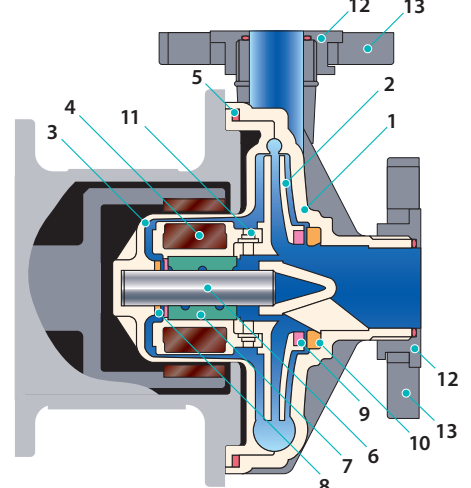
■ MX-F100



■ MX-F250 to F401



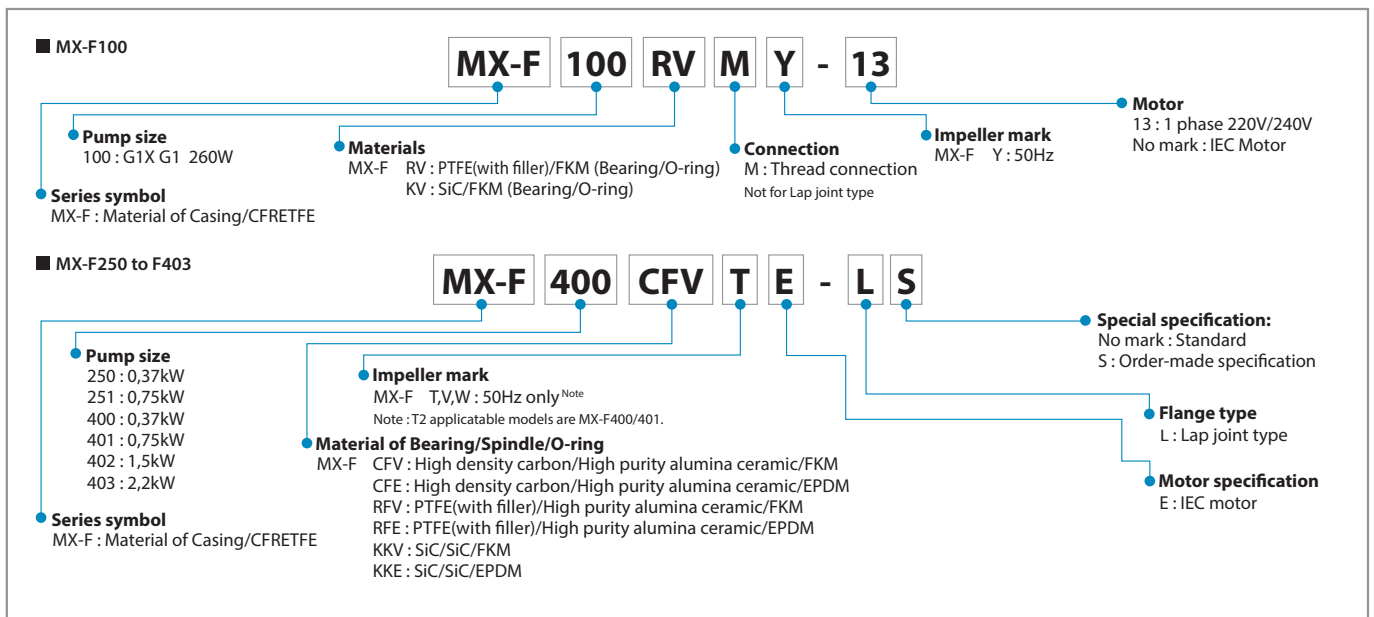
■ MX-F402 to F403



Model	MX-F100		MX-F250 to F401			MX-F402 to F403		
	RV/RE	KV/KE	CFV/CFE	RFV/RFE	KKV/KKE	CFV/CFE	RFV/RFE	KKV/KKE
1 Front casing	CFRETFE		CFRETFE			CFRETFE		
2 Impeller	CFRETFE		CFRETFE			CFRETFE		
3 Rear casing	CFRETFE		CFRETFE			CFRETFE		
4 Magnet capsule	CFRETFE		CFRETFE			CFRETFE		
5 O ring <small>Note 1</small>	FKM/EPDM		FKM/EPDM			FKM/EPDM		
6 Spindle	High purity alumina ceramic	SiC	High purity alumina ceramic	SiC	High purity alumina ceramic	SiC	High purity alumina ceramic	SiC
7 Bearing	PTFE(with filler)	SiC	High density carbon	PTFE(with filler)	SiC	High density carbon	PTFE	SiC
8 Rear thrust	High purity alumina ceramic	SiC(Front & Rear)	CFRETFE			CFRETFE		
9 Mouth ring	PTFE(with filler)	-	PTFE(with filler)	SiC	PTFE(with filler)	SiC	PTFE(with filler)	SiC
10 Thrust/Liner ring	High purity alumina ceramic	-	High purity alumina ceramic	SiC	High purity alumina ceramic	SiC	High purity alumina ceramic	SiC
11 Lock pin	-		-			CFRETFE		
12 Inner flange	-		CFRETFE			CFRETFE		
13 Outer flange	-		GFRPP			GFRPP		

Note 1: O-rings made of AFLAS® are also available.

Pump identification



Specifications

50Hz

Model	Connection Suction X Discharge	Limit of specific gravity ^{Note1}	Standard capacity L/min - m	Maximum capacity L/min	Motor kW	Mass kg
MX-F100 Y	G1 x G1 ^{Note2}	1,9	70 - 5,8	110	0,26	8,5
MX-F250 T	25 x 25	1,2	50 - 11,7	150	0,37	13,5
MX-F250 V		1,5	50 - 9,1	145		
MX-F250 W		1,8 to 2,0	50 - 6,4	126		
MX-F251 T	25 x 25	1,2	80 - 15,7	150	0,75	22
MX-F251 V		1,5	80 - 12,2	150		
MX-F251 W		1,8 to 2,0	80 - 9,4	120		
MX-F400 T2	40 x 40	1,2	100 - 9,0	250	0,37	13,5
MX-F400 V		1,5	100 - 8,1	230		
MX-F400 W		1,8 to 2,0	100 - 5,5	210		
MX-F401 T2	40 x 40	1,2	150 - 12,8	270	0,75	22
MX-F401 V		1,5	150 - 10,8	260		
MX-F401 W		1,8 to 2,0	150 - 8,1	240		
MX-F402 T	50 x 40	1,2	200 - 18,3	440	1,5	38
MX-F402 V		1,5	200 - 16	430		
MX-F402 W		1,8 to 2,0	200 - 12,5	410		
MX-F403 T	50 x 40	1,2	250 - 22,8	510	2,2	43
MX-F403 V		1,5	250 - 19,4	500		
MX-F403 W		1,8 to 2,0	250 - 15,3	470		

Note1: The specific gravity limit varies with the discharge. For details, please contact us.
 Note2: 26mm tube connection option available on the MX-F100.

Common specifications

• Range of liquid temperature : 0 to 80°C (10 to 80°C in case AFLAS® O-rings are used.) • Range of ambient temperature : 0 to 40°C.

Precautions for pump selection

1. The performance curves on this catalogue are based on clean water of 20 °C. Keep a margin (3% of curves) when selecting the pump.

2. For the MX-F250, select a proper impeller size according to specific gravity. Always keep 10% allowance to motor output.

$$Sp \times S.G \times (1,1) \leq \text{Motor output} \\ \text{Allowance}$$

3. The magnetic drive pump is not durable for a long time in closed-discharge operation. Always keep the minimum flow.

Minimum flow
 MX-F100, 250, 251, 400, 401: 10 L/min
 MX-F402, 403: 20 L/min

4. NPSH validation
 Observe the following for the prevention of cavitation.

$$NPSHa \geq NPSHr + 0,5 \text{ m} \\ \text{Allowance}$$

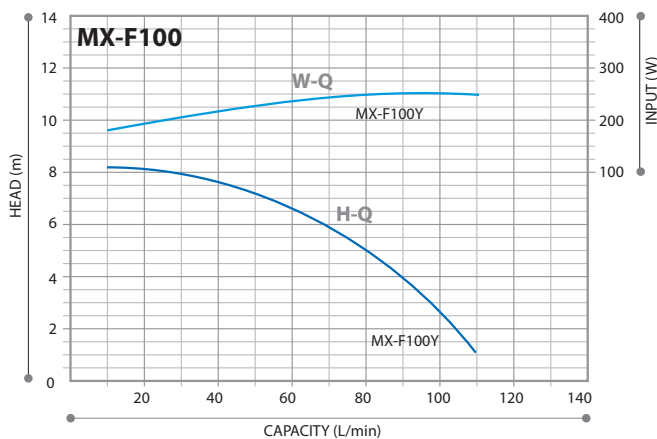
$$NPSHa = 10^6 \times \frac{(Pa - Pv) \pm hs - hfs}{\rho \cdot g}$$

5. Maximum withstand pressure

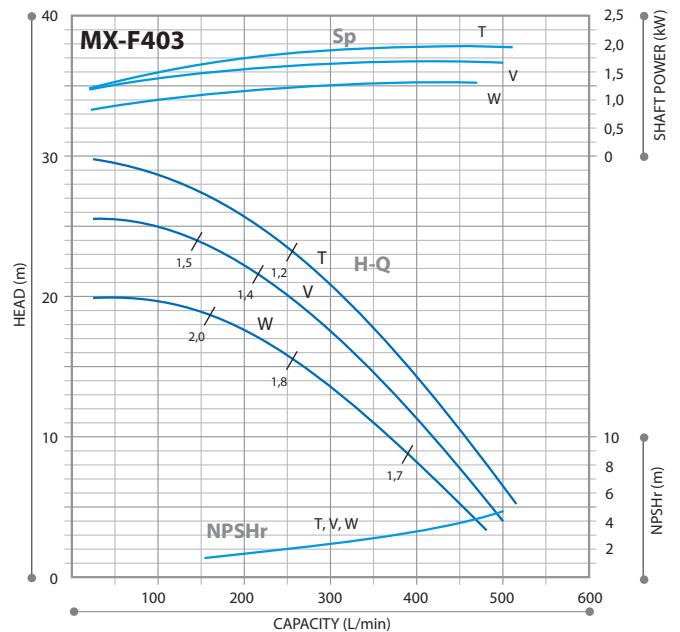
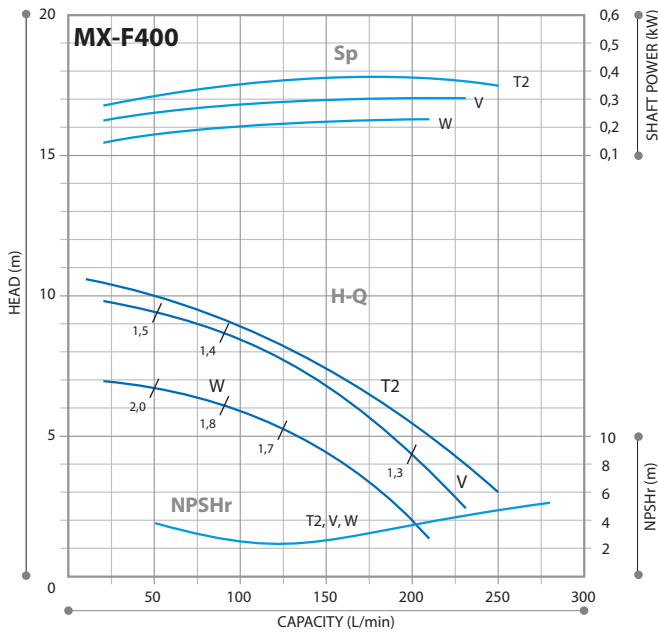
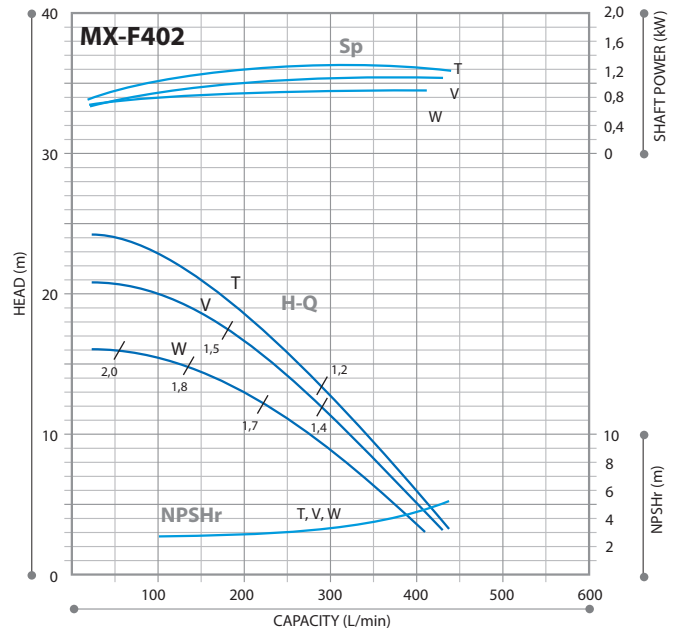
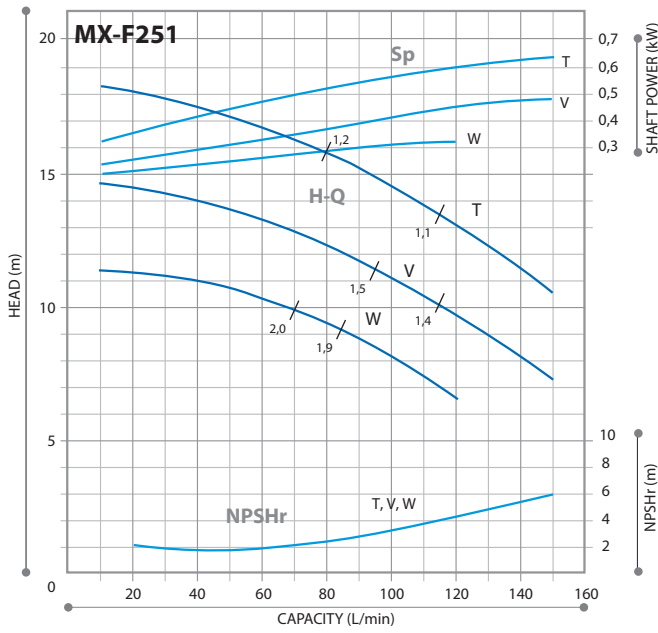
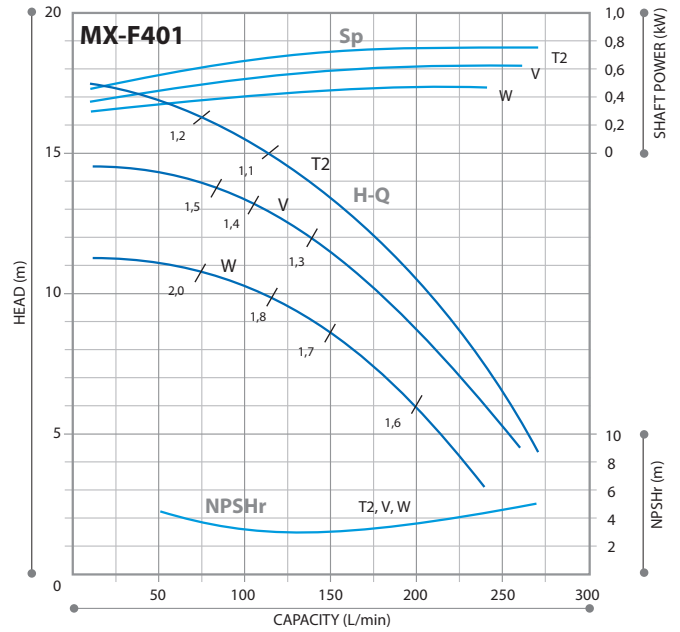
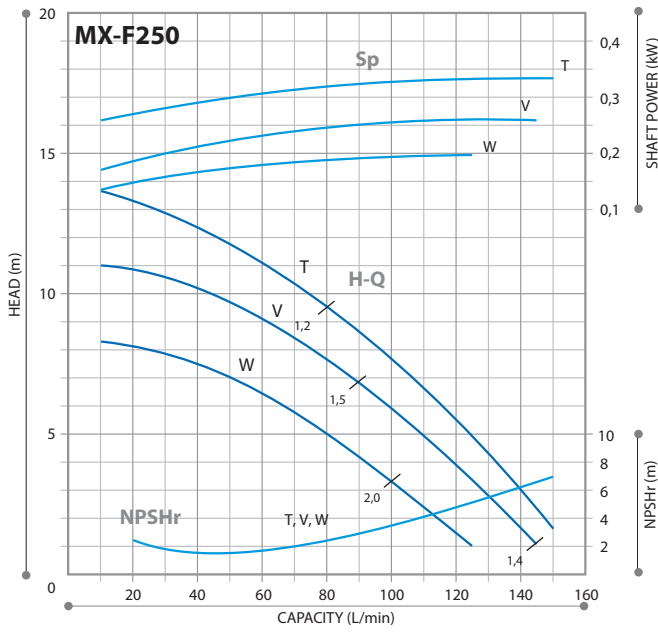
MX-F100: 0,19MPa MX-F400: 0,22MPa
 MX-F250: 0,25MPa MX-F401: 0,28MPa
 MX-F251: 0,33MPa MX-F402: 0,43MPa
 MX-F403: 0,43MPa

NPSHa: Net Positive Suction Head Available (m)
 NPSHr: Net Positive Suction Head Required (m)
 Pa: Pressure on the suction liquid level (MPa) (Absolute pressure)
 Pv: Pressure of saturated vapor (MPa)
 hs: Static suction head (m)
 hfs: Suction pipe resistance (m)
 ρ: Liquid density (kg/m³)
 g: G-force (9.8m/sec²)

Performance curves



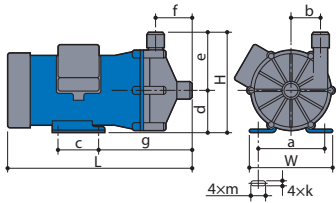
Performance curves



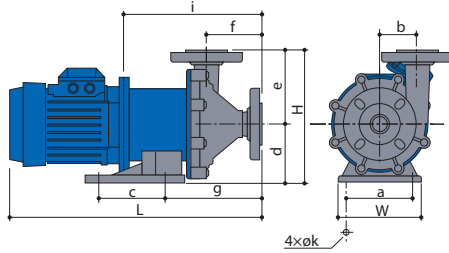
Note: The specific gravity limit described in the head is only a guide and please contact us for details.

Dimensions

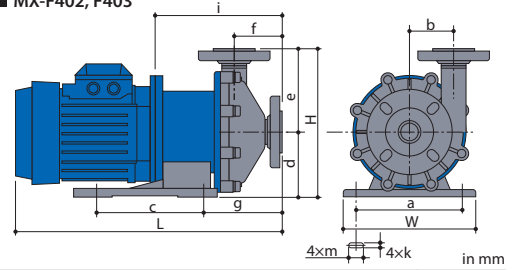
■ MX-F100



■ MX-F250 to F401



■ MX-F402, F403



Models	W	H	L	a	b	c	d	e	f	g	k	m	i
MX-F100	150	175	319,5	110	51	70	75	100	65	162	9	27	—
MX-F250	160	255	411	130	65	130	115	140	90	163	12	—	221
MX-F251	160	255	446	130	65	130	115	140	90	171	12	—	233
MX-F400	140	225	411	110	54	98	95	130	87	150	12	—	221
MX-F401	160	255	459	130	72	130	115	140	103	184	12	—	246
MX-F402	260	280	514	208	80	200	120	160	89	157	14	36	241
MX-F403	260	280	543	208	80	200	120	160	89	157	14	36	241

Note: The dimensions may differ with the type of motor installed.

Optional accessories

Iwaki pump protector DRN series

Detects unusual pump operating conditions including dry-running and overload

The DRN model protects equipment (including pumps) from damage! Minimizes production downtime. Identifies possible causes of alarms so they can be investigated and addressed.

Multiple Input	Two analog, one digital, one temperature input and one current input
Easy operation	Equipped with EASY setup mode to remember the operation status and set the lower/upper limit values, as well as AUTO setup mode
Bar graph	Visible indication of current operating status
Logging capability	Data log feature for preventative maintenance scheduling
Communication	RS485 external communication capability



Specifications

Model	DRN-01	DRN-02
Amperometric range	0,5-30,00A	5,0-200,0A
Unit's source voltage	AC100-240V 50/60Hz 10VA	
Operating temperature	0-40°C	
Operating humidity	35-85%RH	



<https://www.iwakiEurope.com>

IWAKI Europe GmbH, Siemensring 115, 47877 Willich, Germany

TEL: +49 2154 9254 47 FAX: +49 2154 9254 55 E-Mail: sales@iwaki.de



Caution for safety use:

Before use of pump, read instruction manual carefully to use the product correctly.

Actual pumps may differ from the photos. Specifications and dimensions are subject to change without prior notice. For further details please contact us.



Legal attention related to export.

Our products and/or parts of products fall in the category of goods contained in control list of international regime for export control. Please be reminded that export license could be required when products are exported due to export control regulations of countries.

The posting and copying from this catalogue without permission is not accepted firmly.